



Tunes 2024

Banjo Skelett-Tabs

C
Altamont
Billy in the Lowground
Wagoner One-Step

G
Possum on a Rail
Roscoe
Waynesboro

D
Fortune
Going across the Sea
Julianne Johnson
Susanana Gal / Fly Around

A
Lonesome Road Blues
Reuben's Train
Sourwood Mountain
Waterbound

Der Rhythmus eines Banjos ist wichtiger als seine Harmonie oder Melodie. Das bedeutet, dass man sich beim Lernen mehr auf die rechte als auf die linke Hand konzentrieren sollte.

Pete Seeger in "How to play the 5-String Banjo", 1948

Die Idee meiner Skelett-TABs ist es, den Fluss im Banjospielen zu fördern. Alle TABs können mit den zwei Grund-Figuren Bum-ditty und Bum-Bum gespielt werden. Dadurch lernt man die Melodie und die Akkorde des Stückes, aber vor allem man kann sich auf Drive und Rhythmus konzentrieren.

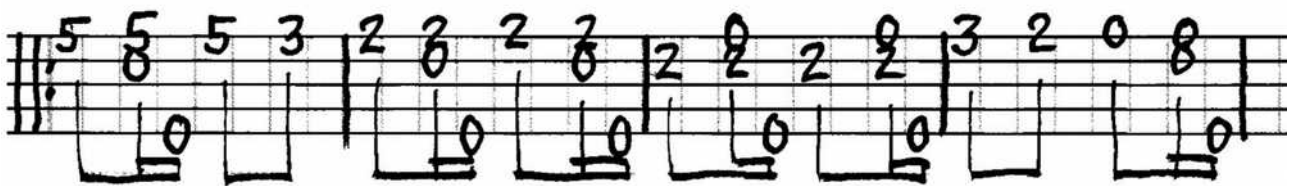
Wenn man ein Stück dann zwar einfach, aber sicher und gut spielen kann, geht es leichter, Ideen, Tipps und Tricks von anderen aufzunehmen.

Am allerwichtigsten jedoch ist es, sich die Tunes anzuhören, bis man mitsummen oder mitpfeifen kann.

Lars Dahl

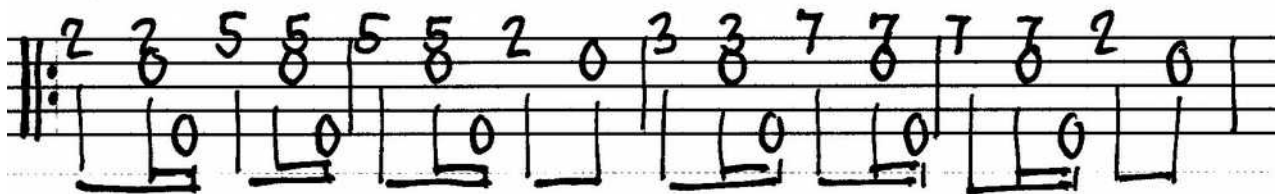
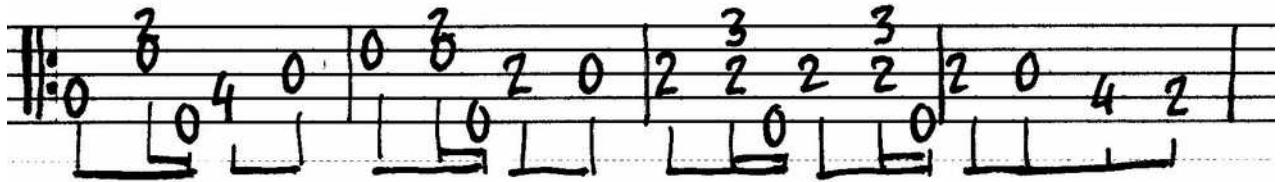
C gCGCD

Altamont



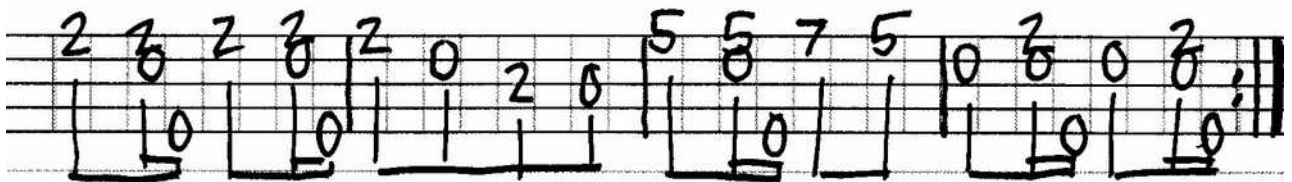
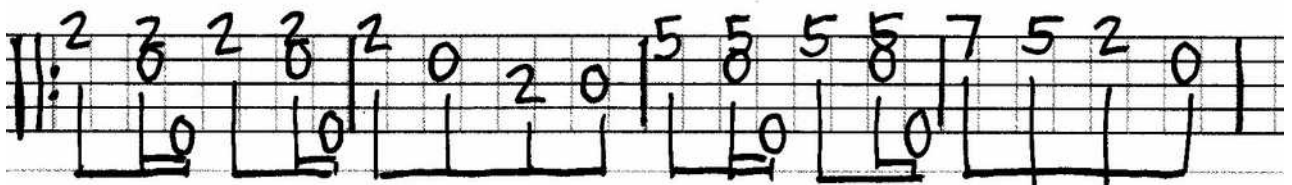
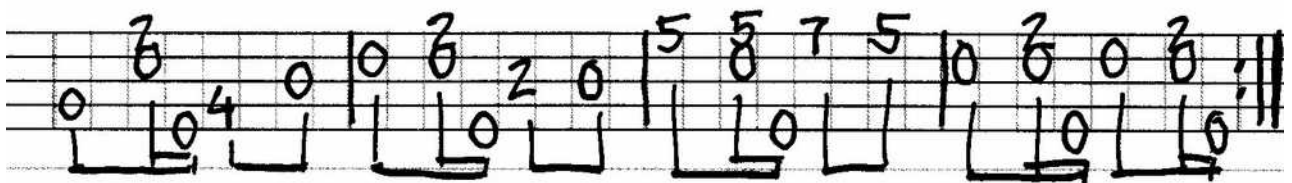
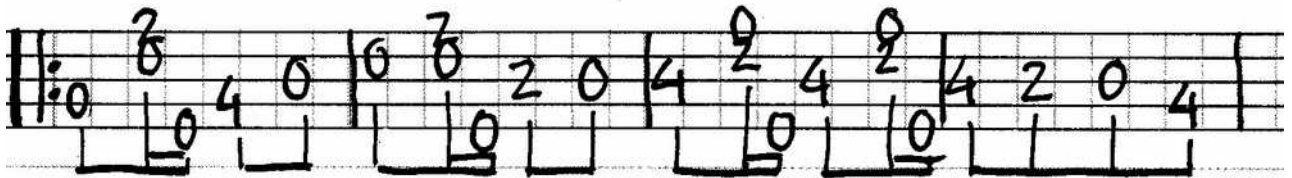
C gCGCD

Billy in the Lowground



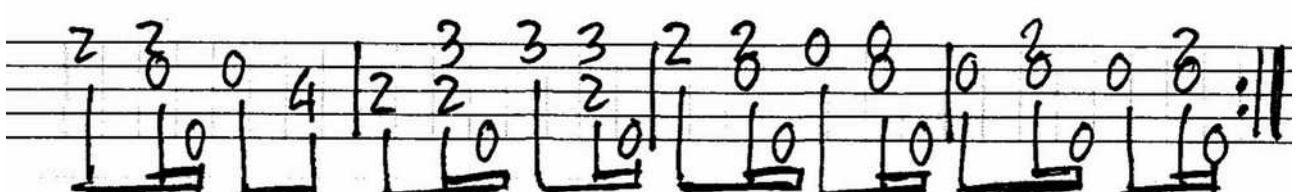
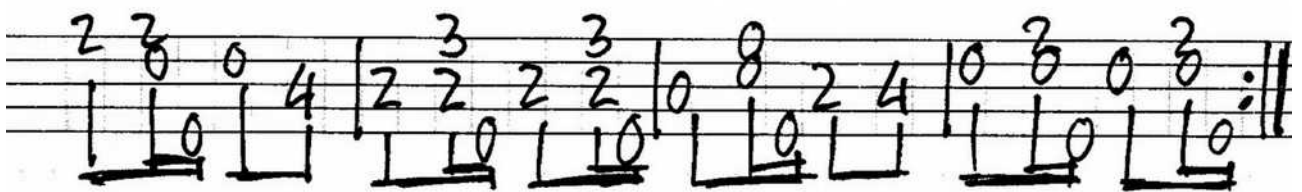
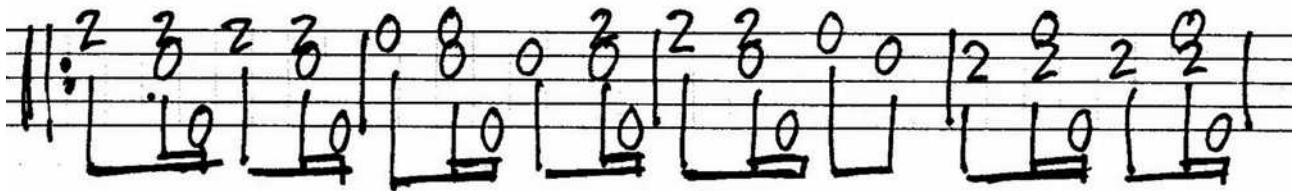
C gCGCD

Wagoner One-Step



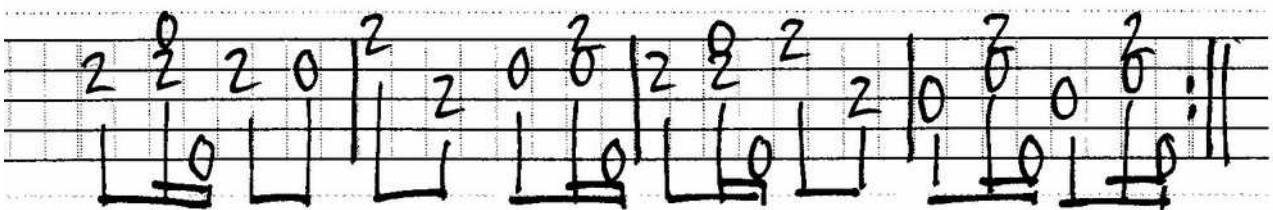
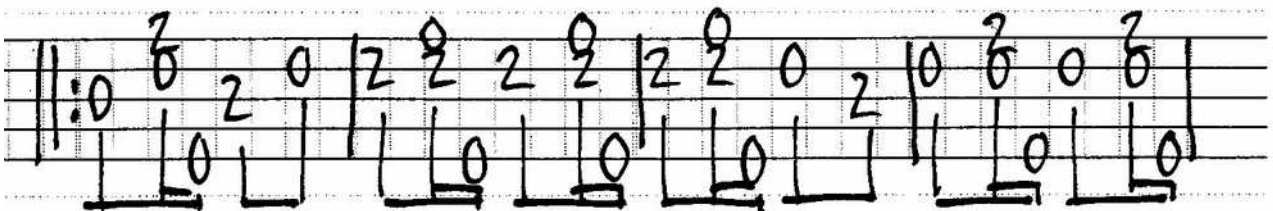
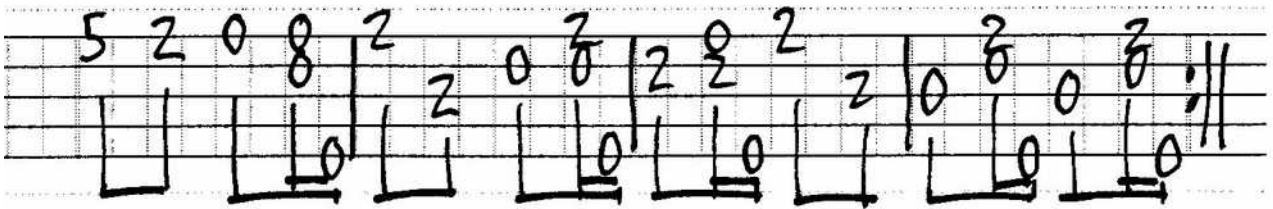
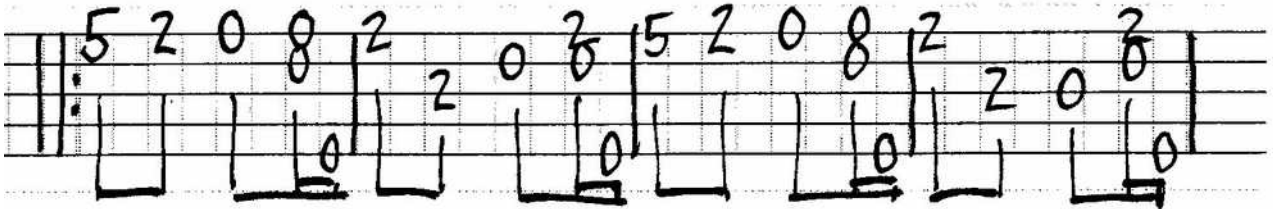
D aDADE

Fortune



D aDADE

Going across the Sea



D aDADE

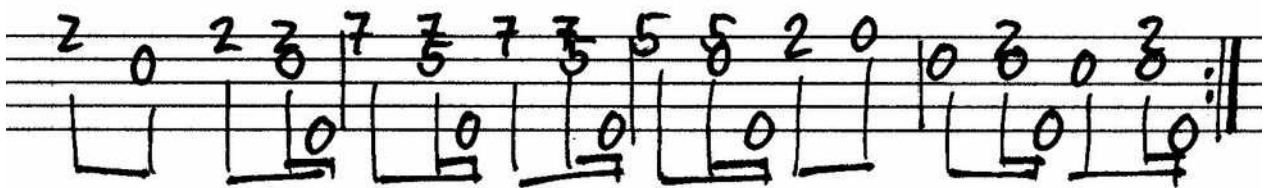
Julianne Johnson



D aDADE

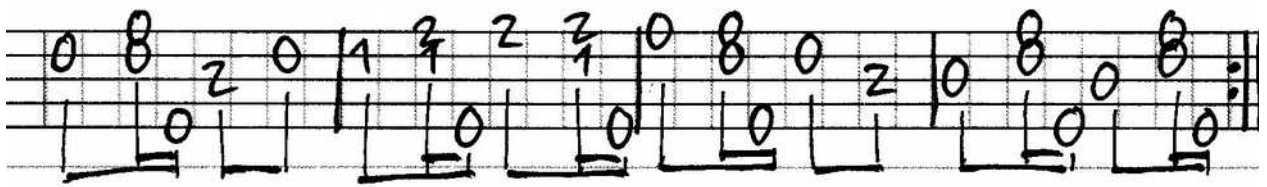
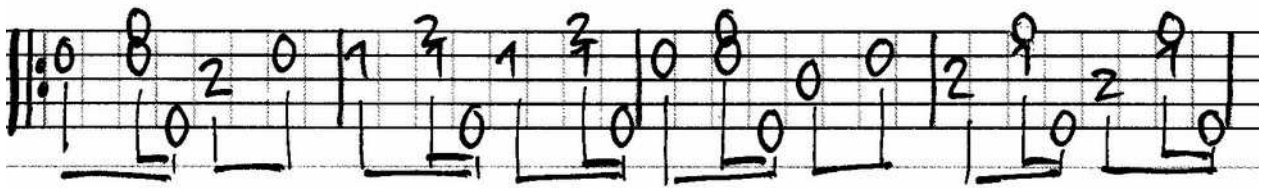
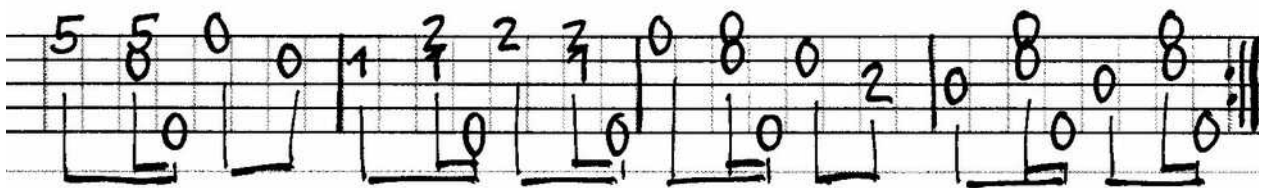
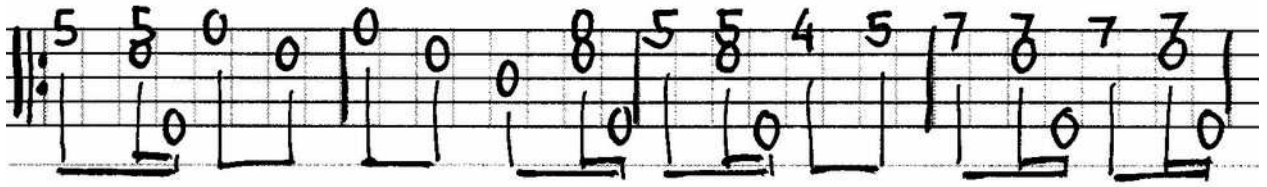
Susanana Gal /

Fly Around Pretty Little Miss



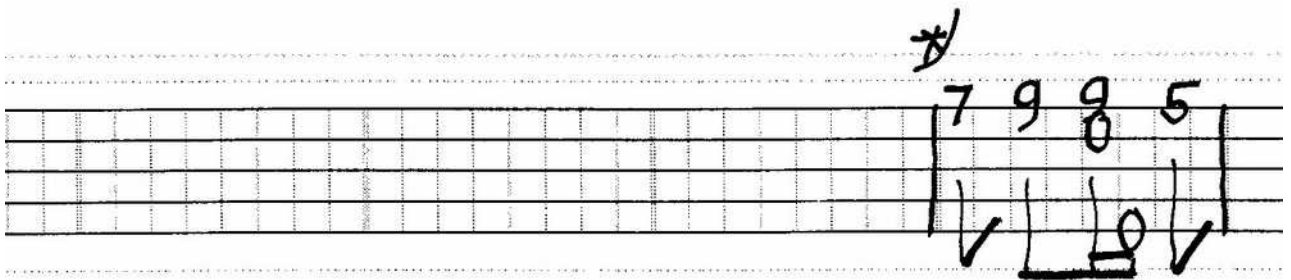
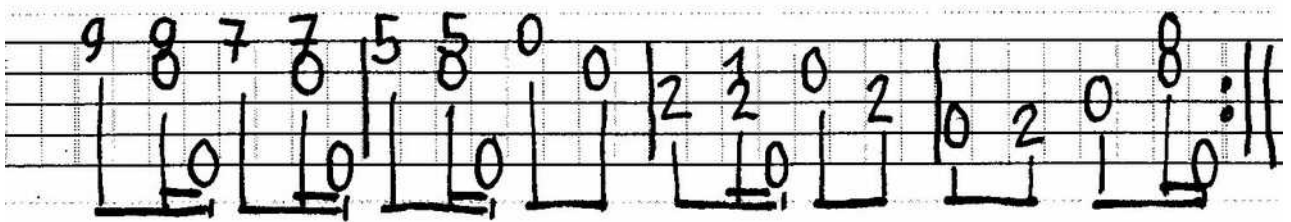
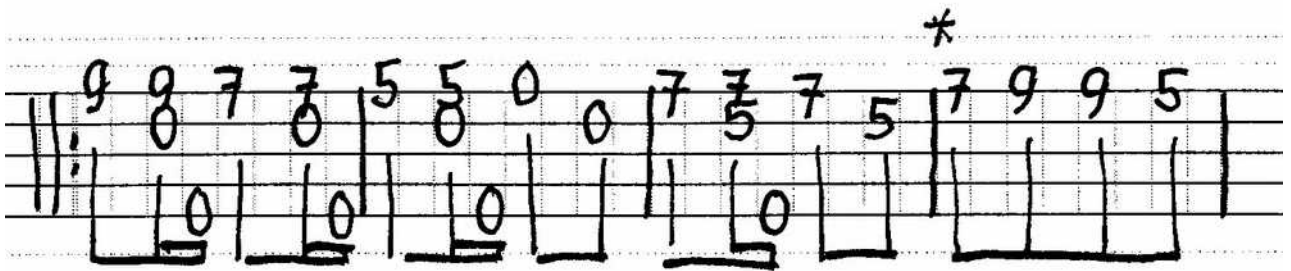
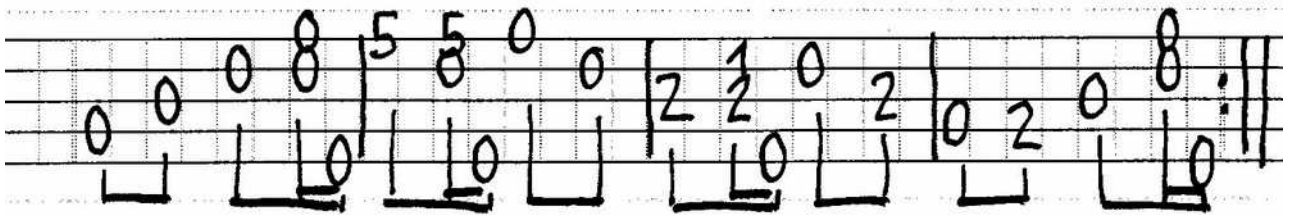
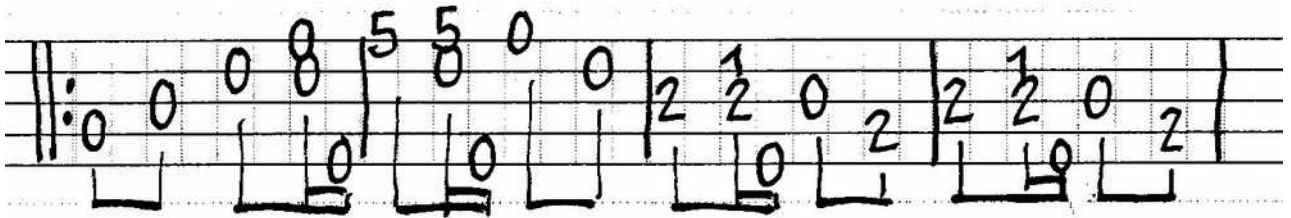
G gDGBD

Roscoe



G gDGBD

Waynesboro



A aEAC#E

Lonesome Road Blues

Handwritten banjo tablature for "Lonesome Road Blues" in A minor (aEAC#E). The piece consists of four staves of music. The first staff begins with a capo on the first fret, indicated by a '1' and a double bar line. The notation uses numbers 0-3 for frets and 'x' for muted strings. The piece concludes with a double bar line and a repeat sign.

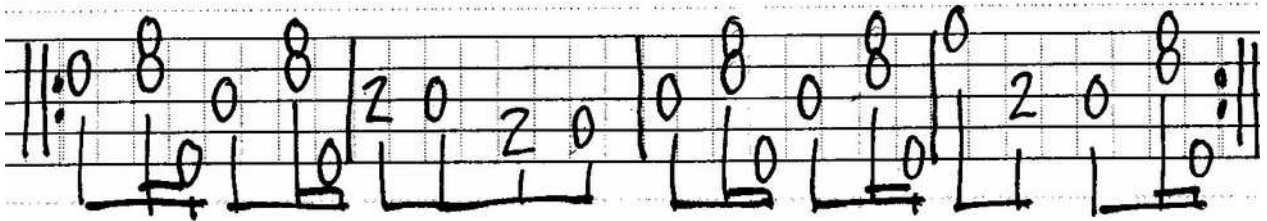
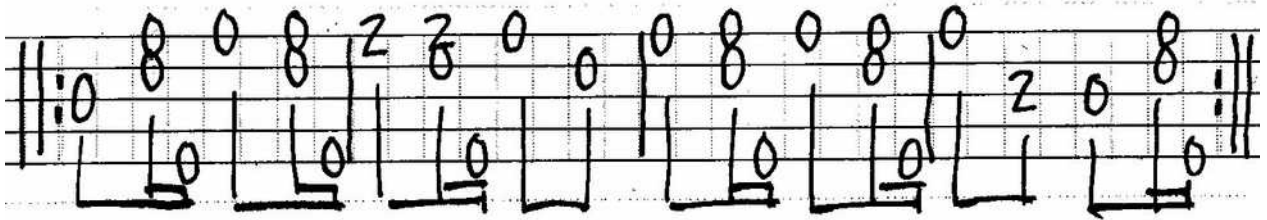
A aEAC#E

Reuben's Train

The image displays four staves of handwritten musical notation for the piece "Reuben's Train". The notation is written in A major, as indicated by the key signature "A aEAC#E". The first staff begins with a treble clef and a key signature of one sharp (F#). The notation consists of rhythmic stems and chord diagrams (circles with numbers) placed above the staff lines. The second staff includes some triplet markings (e.g., "0 3 0 3") above the notes. The third staff features a sequence of fret numbers (5, 5, 5, 5, 5, 5, 5, 5, 5, 5, 5, 4, 5, 4, 0) above the notes. The fourth staff concludes the piece with a double bar line and repeat dots. The overall style is that of a handwritten guitar tablature.

A aEAC#E

Sourwood Mountain



A aEAC#E

Waterbound

